

Table5. Average GRE Percentile Scores for All Schools for Fall Semesters, 2000-2005.

	All Applicants			Offered Admission			Enrolled		
	V	Q	A	V	Q	A	V	Q	A
All Fee-Paid Degree Applicants									
2000	59	71	67	62	68	66	62	60	59
2001	61	74	72	61	67	68	57	59	58
2002	63	73	72	61	71	72	60	64	68
2003	60	67	63	60	62	62	57	60	63
2004	60	63	52	61	61	52	56	54	49
2005	58	62	49	58	61	48	56	56	48

Figure 8. Average GRE Verbal Percentiles of Candidates Offered Admission and Enrolled, 2000-2005

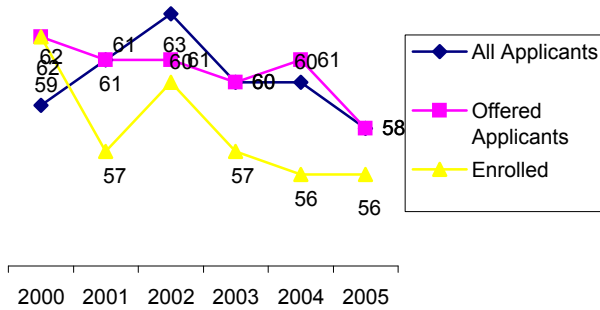


Figure 9. Average GRE Quantitative Percentiles of Candidates Offered Admission and Enrolled, 2000-2005

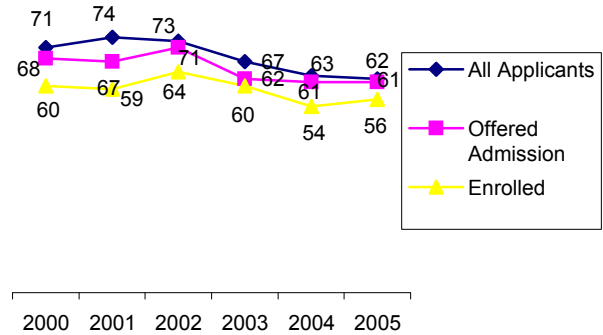


Figure 10. Average GRE Analytical Percentiles of Candidates Offered Admission and Enrolled, 2000-2005

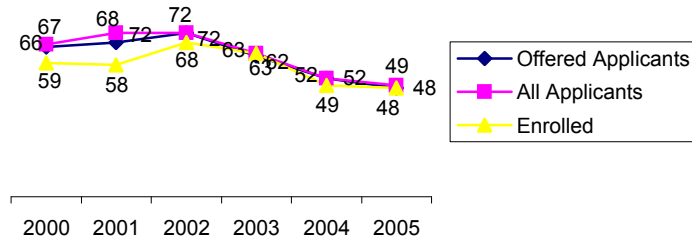


Figure 11. Harpur College GRE percentiles for Enrolled Students, 2000-2005

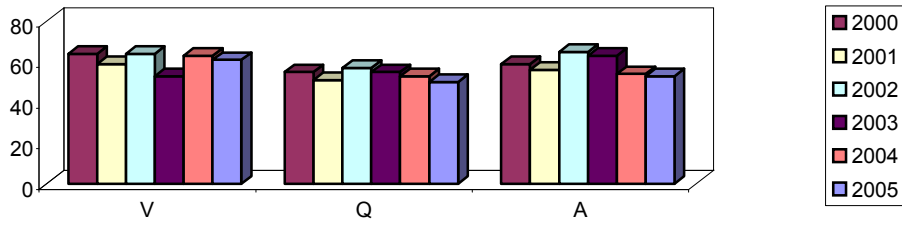


Figure 12. Decker School GRE Percentiles For Enrolled Students, 2000-2005

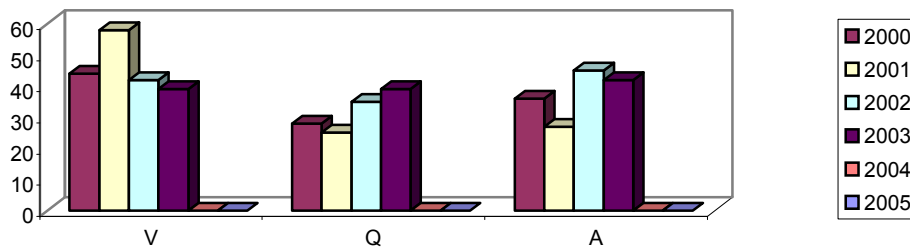


Figure 13. Watson School GRE Percentiles For Enrolled Students, 2000-2005

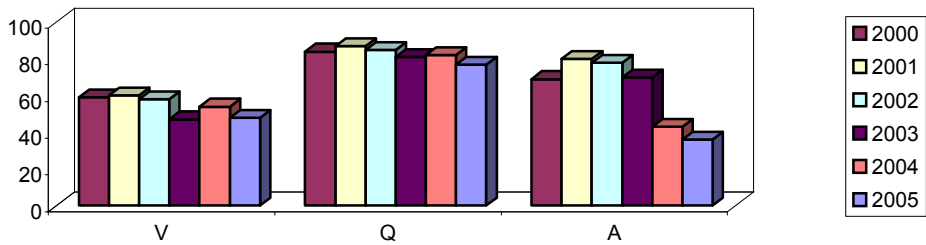


Figure 14. SEHD School GRE Percentiles For Enrolled Students, 2000-2005

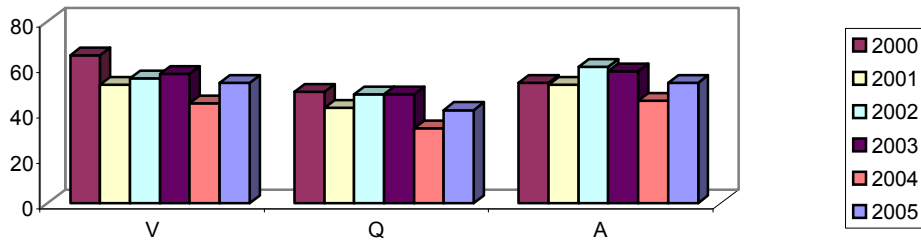


Table 6. Average GRE Percentile Scores by School for Fall Semesters, 2000-2005

	All Applicants			Offered Admission			Enrolled		
	V	Q	A	V	Q	A	V	Q	A
Harpur College of Arts and Sciences									
2000	63	62	63	64	58	63	64	55	59
2001	69	72	71	59	57	59	59	51	56
2002	67	65	69	67	62	68	64	57	65
2003	71	66	68	69	61	65	53	55	63
2004	64	59	55	66	57	55	63	53	54
2005	63	56	54	63	55	54	61	50	53
Decker School of Nursing									
2000	47	33	41	47	33	41	44	28	36
2001	45	18	27	45	18	27	58	25	27
2002	43	34	38	44	36	38	42	35	45
2003	41	35	44	41	35	44	39	39	42
2004	24	30	37	25	14	47	0	0	0
2005	45	46	38	45	34	32	0	0	0
Watson School of Engineering									
2000	60	89	75	61	88	76	59	84	69
2001	67	91	83	61	86	78	60	87	80
2002	59	87	78	62	87	79	58	85	78
2003	62	86	75	62	86	76	47	81	70
2004	58	83	48	60	83	50	54	82	43
2005	49	78	36	50	79	35	48	77	36
School of Education and Human Development									
2000	58	44	49	63	47	54	65	49	53
2001	57	36	48	56	37	53	52	42	52
2002	53	45	52	55	46	57	55	48	60
2003	57	47	54	59	49	58	57	48	58
2004	47	34	46	47	35	46	44	33	45
2005	52	39	49	55	41	54	53	41	53

Table 7. Average Total GMAT Scores for Fall Semesters, 2000-2005

	All Applicants		Offered Admission		Enrolled	
	Total Score	Percentile	Total Score	Percentile	Total Score	Percentile
School of Management						
2000	565	61	585	68	579	66
2001	572	61	586	66	558	58
2002	574	62	594	68	581	64
2003	589	66	615	73	601	69
2004	575	64	606	71	590	67
2005	575	60	598	67	591	65

Figure 15. Average GMAT Scores of Applicants Offered Admission, 2000-2005

